

FINDING WORK



TOYS and TREASURES

The Company

Toys and Treasures is situated in the old Marshall Wells Store which was built in 1930 following the “great fire” of 1929 that destroyed most of the Town’s businesses. The building is now a designated heritage building. In 1998 an evolutionary change began with the new owners, and the store was renamed “Toys and Treasures”, with a new style of merchandise. Independently owned and operated, the store continues to grow and change and the owners constantly bring in new and varied product selection to the delight of their customers.

Mission Statement

“Endeavouring to create the most memorable shopping destination for all your gift giving needs”

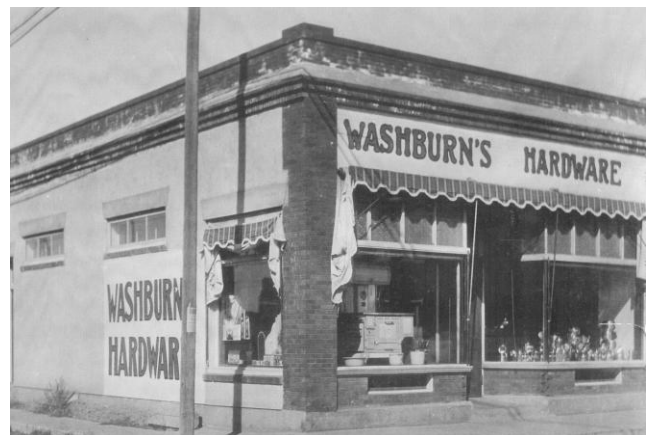
Toys and Treasures has an amazing gifts and toys selection, including: Tilley Hats, Bradford collectibles, Body and Spa products, Wall Art and Lamps, Kameleon jewellery, Espe Purses, Playmobile, Cobra R/C Helicopters, Corolle Dolls, Melissa & Doug, Bumbo and more for babies, models, puzzles and games. In addition to the above, the store carries an excellent line of kitchen ware, including Breyer, Kitchen Flair and entertaining features.

In 2002, Toys and Treasures proudly accepted the Customer Service Award, and their employees have been honoured as “Employee of the Year” and “Citizen of the Year” awards by the Wainwright and District Chamber of Commerce. Staff is committed to helping you with your needs, requests and wishes. Come see for yourself amazing gifts and toys beyond your expectation.



The store typically employs two full time and two part-time sales assistants, and may hire additional employees during peak seasons such as Christmas.

Hours of business are Monday through Saturday, from 9:00 a.m. to 6:00 p.m. The store is closed Sundays and holidays.



The Ideal Candidate

The ideal candidate to work at Toys and Treasures will have the following attributes:

- Enthusiastic
- Prompt and dependable
- Neat and dressed appropriately
- Organized
- Positive attitude
- Good communication skills
- Ability to work well with others
- Able to think and learn independently and perform beyond what is asked for
- Willingness to ask questions if unsure of procedures or product knowledge
- Till experience an asset

Sales Assistant

Responsibilities and requirements include:

- Customer service
- Merchandising displays
- Develop a good knowledge of product lines
- Receive payment by cash, debit and credit card
- Clean and maintain work area
- Advise customers on purchase
- Must have excellent telephone etiquette
- Must have ability to communicate well
- May be required to supervise others on occasion, depending on position applied for

Salary and Benefits

Wages are dependent upon experience and length of service. The company provides staff discounts.

How to Apply

Recruitment is typically through local newspapers, door sign or on www.wantjobgotjob.com.

Interested applicants should apply with a resume and be prepared to provide references. Applicants will be expected to fill in a company application form.

Apply to: Lynne Frizzell
Toys and Treasures
302 – 10th Street
Wainwright, AB T9W 1P6

Tel: 780 842-3903
Email: toystr@telus.net